

The Instructions Of Feiyu Tech New USB Data Cable

Feiyu tech new USB data cable :



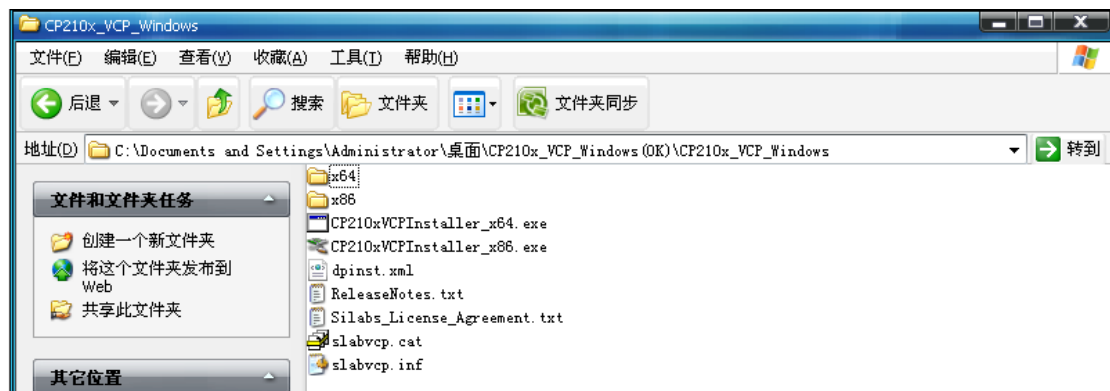
1. Download the USB driver


Download the "Feiyu Tech New USB Driver" on our official website:

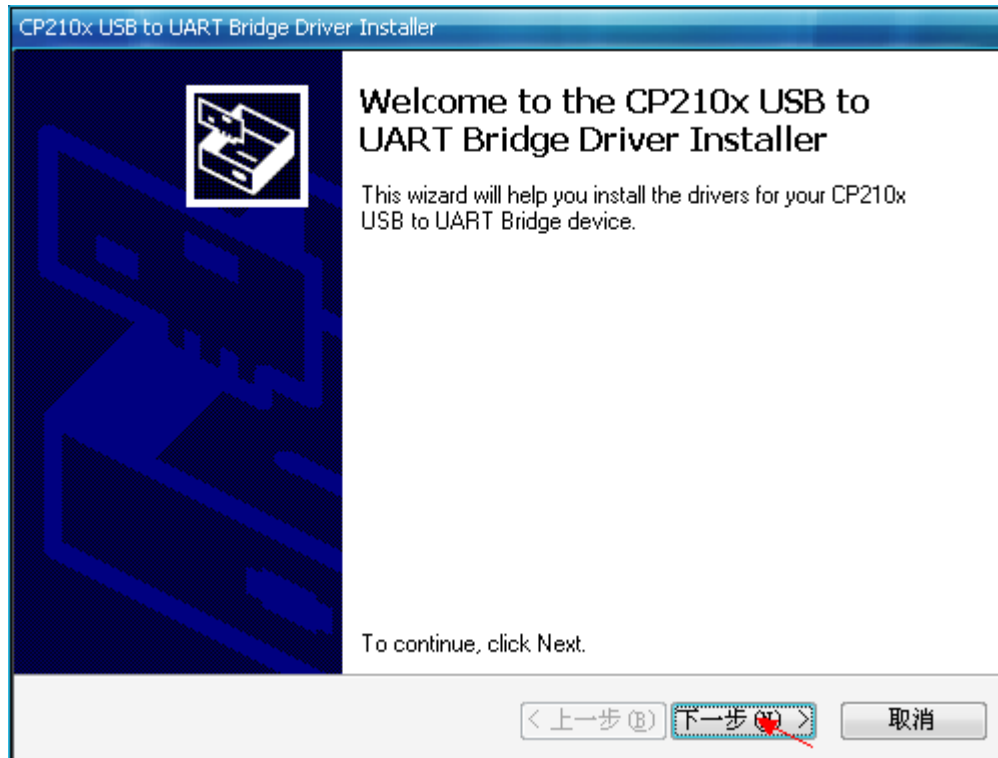
<http://www.feiyu-tech.com/download.php?id=66>



2. The installation of the "Feiyu Tech New USB Driver"

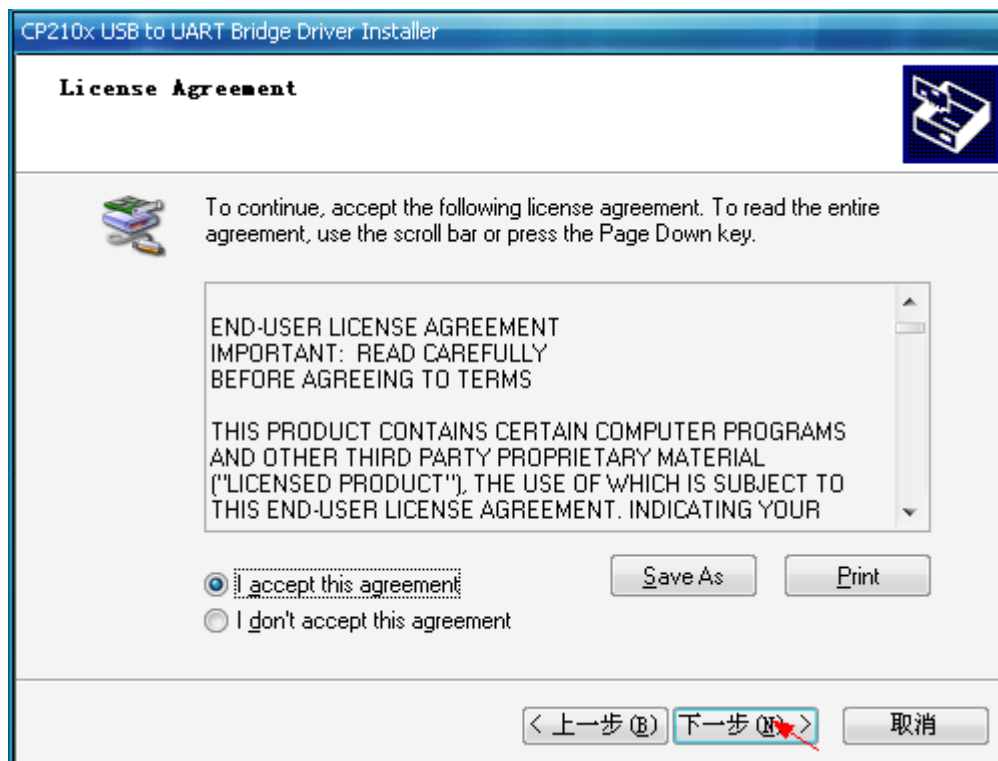
(1) Double-click the driver, install by default.

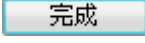


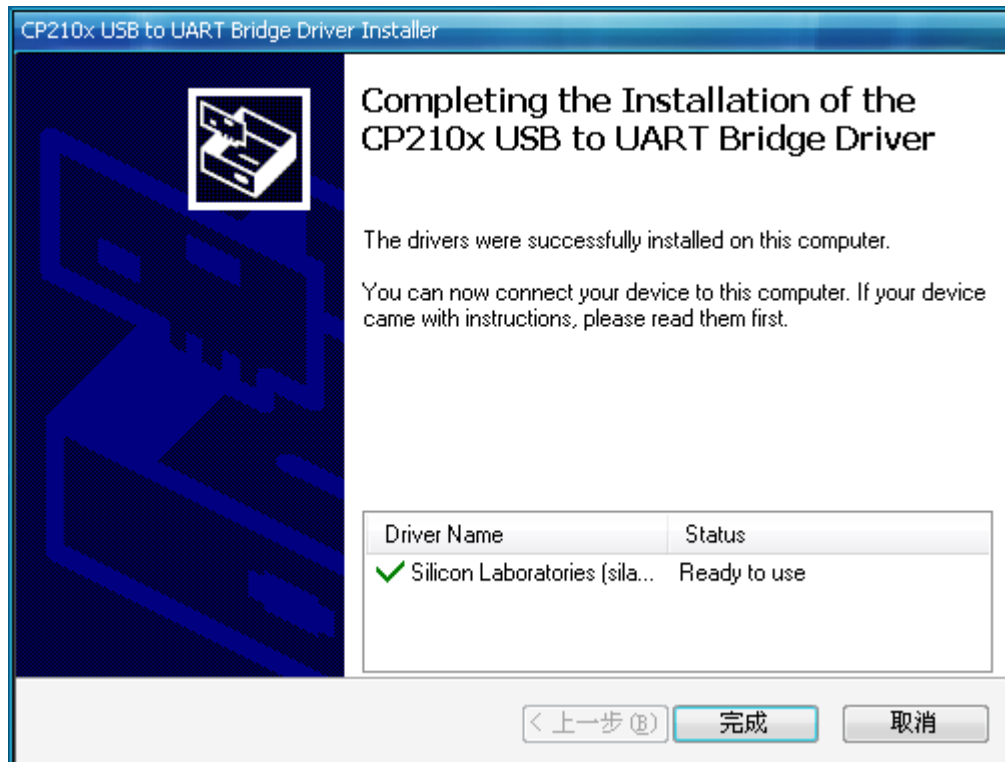
- (2) Click “  (Next) ” button to install.



- (3) Select “  ☒ accept this agreement ” and then click “  (Next) ” to continue.

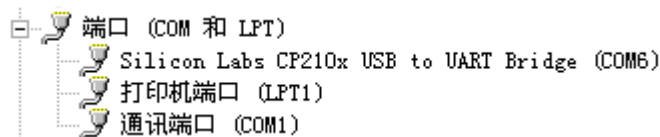


(4) Click “  (Finish) ” button to finish the installation.



3. Confirm the USB-TTL Virtual serial number (Take Win XP for example)

(1) After successfully install the USB driver, insert the USB-TTL interface cable into computer USB COM port(don't connect TTL port to any other device) , the system will correctly identify the USB -TTL data cable, then you will find there is more than one port(COM and LPT), the port COM6 in the “Silicon Labs CP210x USB to UART Bridge (COM6)” is the Virtual serial number.



(2) Insert a few times for confirmation the virtual serial number. After that , you can use the new USB data cable normally.

—— END ——

Note: We reserve the right to change this manual at any time! And the newest edition will be shown on our website www.feiyu-tech.com.